

# FlowGARD™ Wireline Retrievable Safety Valve

Surface Controlled Insert Safety Valve Well Protection



## Applications:

- Oil & Gas Wells
- Up to 5,000 ft [1,524 m] setting depth
- Surface controlled
- Working Pressure up to 10,000 psi [690 bar]
- Temperatures up to 300°F [149°C]
- Available for HPHT applications upon request

## Benefits:

- Better production flow
- Less pressure loss
- Serviceable by wireline
- Easy to install and operate
- 20-year design life
- Bubble tight seal

## Features:

- Novel “flapperless” design for better well protection
- Larger effective flow area than “flapper-style” insert safety valves
- Pump-through capability
- Field re-dressable
- Robust equalization standard
- Erosion resistant materials

## Description

The FlowGARD™ is a wireline retrievable safety valve (WRSV) rated for working pressures of up to 10,000 psi [690 bar] and temperatures up to 300°F (149°C). The FlowGARD™ compact design utilizes a GARD™ metal-to-metal ball and seat closure seal to provide 100% well containment when closed.

The FlowGARD™ is connected to a downhole lock and landed in either a dedicated hydraulic landing nipple or inside a TRSV where hydraulic communication has been established. The FlowGARD™ is a “fail-safe”, normally closed valve that will protect production installations from uncontrolled flow if wellhead equipment is damaged in a catastrophic event.

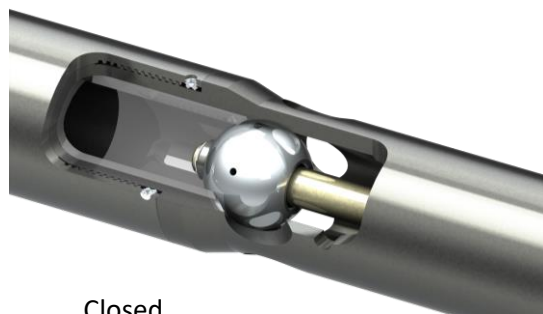
After shut-ins, the integrated self-equalizing design facilitates a rapid return to production, reducing operational downtime. The FlowGARD™ is tested/certified to API-14A-Grade V1 and manufactured in accordance with API-Q1 and ISO-9001:2015 standards. Materials selection options are based on NACE MR-0175 compliance.

10,000 psi FlowGARD™ Wireline Retrievable Safety Valve†			
Tubing Size in [mm]	Polished Bore in [mm]	Max OD in [mm]	Max Production Rate bbl/day
2.875 [73.02]	2.313 [58.75]	2.220 [56.39]	7,700
3.500 [88.90]	2.813 [71.45]	2.720 [69.09]	12,500
4.500 [114.30]	3.813 [96.85]	3.720 [94.49]	25,000

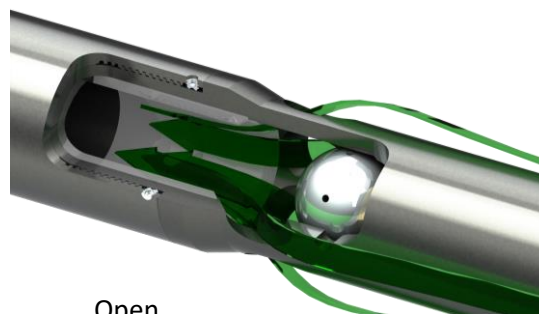
† The engineering data provided illustrate the scope of this product offering and are not all inclusive. Additional sizes and functionality are available upon request.



FlowGARD™ Safety Valve



Closed FlowGARD™



Open FlowGARD™